

# Hydraulic Services

Complete hydraulic engineering projects and solutions.

With over 30 years' experience and a reputation for engineering excellence, our multi-skilled technicians and engineers are supported by an unrivalled technical project management team.

SS&WL's Hydraulic Division offer a full range of hydraulic engineering services in manufacture, testing, installation, commissioning, maintenance, repair and overhaul. Our Hydraulic Services provide a single source for complete hydraulic engineering projects and solutions to meet or exceed SAE, ISO, DIN, DOT, API and JIS standards.



## Hydraulic Product Supplies:

Highly competent and fully conversant with:	Systems Control Panel work-scopes:	Motors and Pumps: (by manufacturer)
<ul style="list-style-type: none"><li>• Parker MPI</li><li>• 316 Stainless Steel</li><li>• Incoloy 825</li><li>• Tungum</li><li>• Super Duplex</li></ul>	<ul style="list-style-type: none"><li>• HPU's: Testing &amp; Flushing Units</li><li>• ROV Launch &amp; Recovery Systems</li><li>• BOP / ESD Systems</li><li>• Accumulator Banks</li><li>• Trees, Winches, Hose Reeling ETC Systems</li><li>• Intrinsically Safe Products &amp; Systems</li></ul>	<ul style="list-style-type: none"><li>• ABB</li><li>• Brookes</li><li>• Siemens</li><li>• TDK</li><li>• TEE</li><li>• Schneider</li><li>• Vickers</li></ul>

# Transmission Services

24/7 on-site diagnostic services to recalibrate or pin point problematic issues.

Transmission's fully trained personnel have over 60 years' experience in transmission rebuilds down to component level and understand that fast-track turnaround is critical. So much so they guarantee that all work will be carried out quickly and efficiently in a bid to reduce extended down time situations.

Services also include 24/7 on-site diagnostic services to recalibrate or pin point problematic issues and in many instances these services curtail the need to remove a unit for repair. This service is also now available for all Allison World Transmissions which are commonly found in cranes, refuse collection trucks, mud pumps, winches and various other offshore plant equipment.

• Allison • Spicer • Volvo • ZF • Twin Disk • Clark • Borg Warner

## Water Jet Profiling Service

SS&WL has a purpose built Water Jet Profiling facility. Using our EH315 machine, we offer a fast, cost effective method of meeting most profiling requirements. To complement this, we can also provide the services of our in-house CAD design facility to produce both 2D and 3D drawings to meet our customers' requirements.

SS&WL can provide both one off & contract profiling services to a vast scope of industries such as Construction, Manufacturing, Oil & Gas, Automotive, Marine & Aerospace, and this is proving to be hugely efficient in comparison to Laser or Plasma cutting, EDM and Milling.

## Cutting Materials:



- Aluminium
- Brass
- Copper
- Mild Steel
- Stainless Steel
- Titanium
- Tool Steel
- Rubber
- Polypropylene
- Nylon
- Acrylic Foam
- Plastic
- MDF Fibreboard
- Plywood
- Hardwood
- Glass
- Granite
- Polycarbonate



For further information on our product and service capabilities, please visit our website at [www.subsea-wellhead.com](http://www.subsea-wellhead.com)

Score Subsea and Wellhead Limited  
William Urquhart Building  
Wellbank  
Peterhead  
Aberdeenshire AB42 3GL  
United Kingdom

Tel: +44 1779 485 250  
Website: [www.subsea-wellhead.com](http://www.subsea-wellhead.com)  
[www.score-group.com](http://www.score-group.com)

A division of  
**Score Group plc**  
Group of Companies



Score Subsea and Wellhead Limited  
Intelligent Subsea Solutions™  
[www.subsea-wellhead.com](http://www.subsea-wellhead.com)



## Complete Subsea and Wellhead Solutions



Approvals held within the Score group of companies

# Subsea and Wellhead Solutions

Complete Subsea & Wellhead Project and Maintenance Solutions.

Score Subsea and Wellhead Limited (SS&WL) operates within the subsea valve, topside Xmas tree market. Subsea & Wellhead was originally part of Score Europe with 15 years' experience and became a stand-alone company during 2010. Based in Peterhead, North-East Scotland, our workshop facility of over 6000m<sup>2</sup>, has been specifically designed to accommodate, service and test our Subsea clients' valves, trees and associated equipment. Within our facility we routinely conduct hydrostatic, gas pressure and hyperbaric testing utilising our array of test cells together with our large deep water test pits.

SS&WL also offer a full range of hydraulic engineering services: manufacture, installation, commissioning, maintenance, repair and overhaul.

Our Transmissions Division can fully support client's plant to maximise uptime as they have the facility to fully load test most types of industrial units. To further aid industry, Score has recently upgraded their facilities to fully test all Allison World Transmissions.

We also provide one off & contract water jet profiling services to a variety of industries such as oil & gas, marine, construction, manufacturing, automotive and aerospace.

Within our 160 Acre complex, we also offer clients' safe, secure, monitored storage and maintenance healthcare contracts for their subsea and associated equipment.

As part of the Score Group of companies with 30 locations worldwide, Score Subsea and Wellhead Limited can provide global service and support.

## Subsea Valve Operations

Publications in industry journals and a presence on international standards committees are testimony to the groundbreaking work achieved by Score's engineering team.

SS&WL is a single source for subsea valve operations including Subsea Isolation Valve (SSIV), Xmas Tree Solutions, Site Integration Testing (SIT), Enhanced Testing and Engineering & Design Consultancy (EDC). These services can be performed at our purpose-built facility supported by our global network of locations.

All services are performed by our experienced, technically qualified and dedicated team of engineers and project managers utilising our extensive workshops, equipment and computer-based technology. Through our independent and impartial status, this culminates in providing Intelligent Subsea Solutions and quality service to our client's fulfilment and product realisation.

## Pipeline SSIV's on a Fast-Track Basis

SS&WL can advise on choice of valve, operator and control system for a specific subsea service and provide project stability through to completion. Score has a multi-million pound valve stock and could meet, if not exceed, a client's project schedule. Fast track delivery can be achieved in as little as 2 weeks dependent upon project scope of supply.

## Enhanced Testing and Certification

To ensure integrity and consistency of valves in service, we can perform a range of enhanced tests that not only conform to but exceed minimum international standards. This can include tests that can be performed on valves to simulate actual operating field conditions.

- Hydrostatic Testing
- Fire Type Testing
- Low Temperature Cryogenic Testing
- API 6A, 17D & ISO-13628-7 Testing
- Gas Testing
- Helium Leak Detection
- Hyperbaric Testing
- Bend and Tension Testing
- Elevated Temperature Testing
- Abrasive Flow Testing
- Valve and Operator Diagnostics
- Positive Material Identification (PMI)
- Fugitive Emissions Testing
- Shake Down Testing
- Cyclic, Torque and Vacuum Testing

## Xmas Tree Solutions

Re-engineered and Refurbished units are cost effective and aid depleting material resources, which is environmentally friendly.

In today's unpredictable environment it is readily recognised and understood, wherever possible, that it is better to adapt and reuse capital equipment rather than scrap and go down the overly expensive and lengthy route of new builds. Re-engineered units are cost effective and aid depleting material resources, which is environmentally friendly.

## Client SIT's

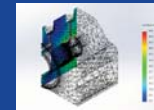
We conduct and arrange Heavy Mobile Lifts, Technicians, Office Project Cabins, Comms, Test Vehicles are also provided at economical rates. Our further enhanced Subsea & Wellhead facility also boasts 3 x Wide Deepwater Test Tanks suitable for diver or ROV equipment familiarisation and training. It is also worth noting that we are only 400m on a direct routing from Peterhead Harbour should the SIT equipment be transported by sea.

## Design and Engineering

Engineered Solution: Score's professional Engineers will review existing Specifications and if required, upgrade or change out the valves, Actuators and Control System.

Should the specification remain unchanged, Score technicians will strip all valves and install as required replacement components. On completion, the tree(s) will undergo a full client approved API Test Programme.

## Engineering & Design Consultancy (EDC)



Drawing on a unique knowledge base of performance data, Score's Engineering & Design Consultancy (EDC) provides clients with independent support at every stage of a project, from Front End Engineering through to commissioning and operation.

Score's specialist engineering team utilise industry best practices and unique empirical data from continuous operational feedback to assist with selection, design, failure analysis and product enhancement. This coupled with involvement in international bodies and leadership in industry initiatives, makes Score's EDC the only resource of its kind tailored to solve subsea equipment related problems.

## EDC Expertise & Facilities:

- Eng Calculations & FEA - Finite Element Analysis
- Condition Monitoring and Instrumentation
- Mathematical Modelling & Data Logging
- Standards Verification & Validation
- Software Writing & Programming
- 3D Parametric CAD – 2D Draughting
- Technical Bid Evaluations
- Investigation & Failure Reports
- Feasibility Studies & Prototyping
- Product Enhancement

## Services:

- Supply, overhaul and testing of subsea isolation valves and actuation
- Overhaul and testing of subsea and topside API Xmas Tree equipment
- Engineering and Design Consultancy (EDC)
- Hydraulic Engineering Services
- Transmissions: repair & recertification service
- Facilitating of site integration tests (large scale equipment)
- 24/7 quayside support services and supply
- DSV Tech support during offshore operations
- Design, testing and engineering support for subsea products & systems
- Extensive internal and external storage areas

